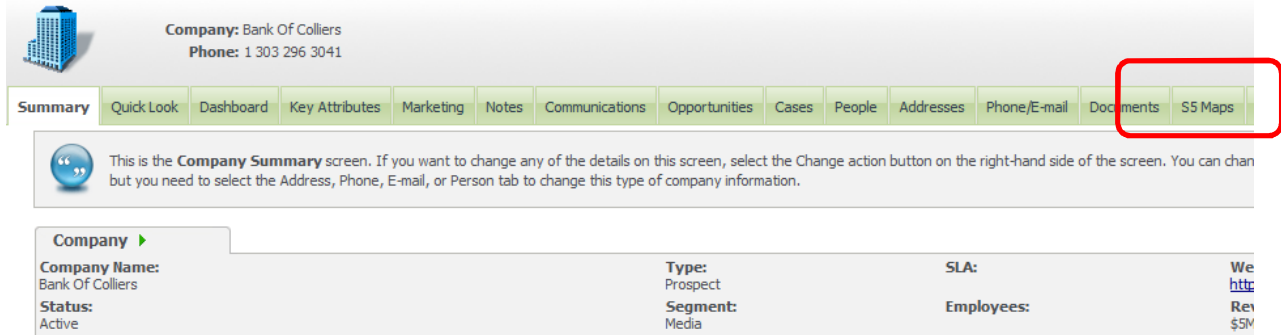


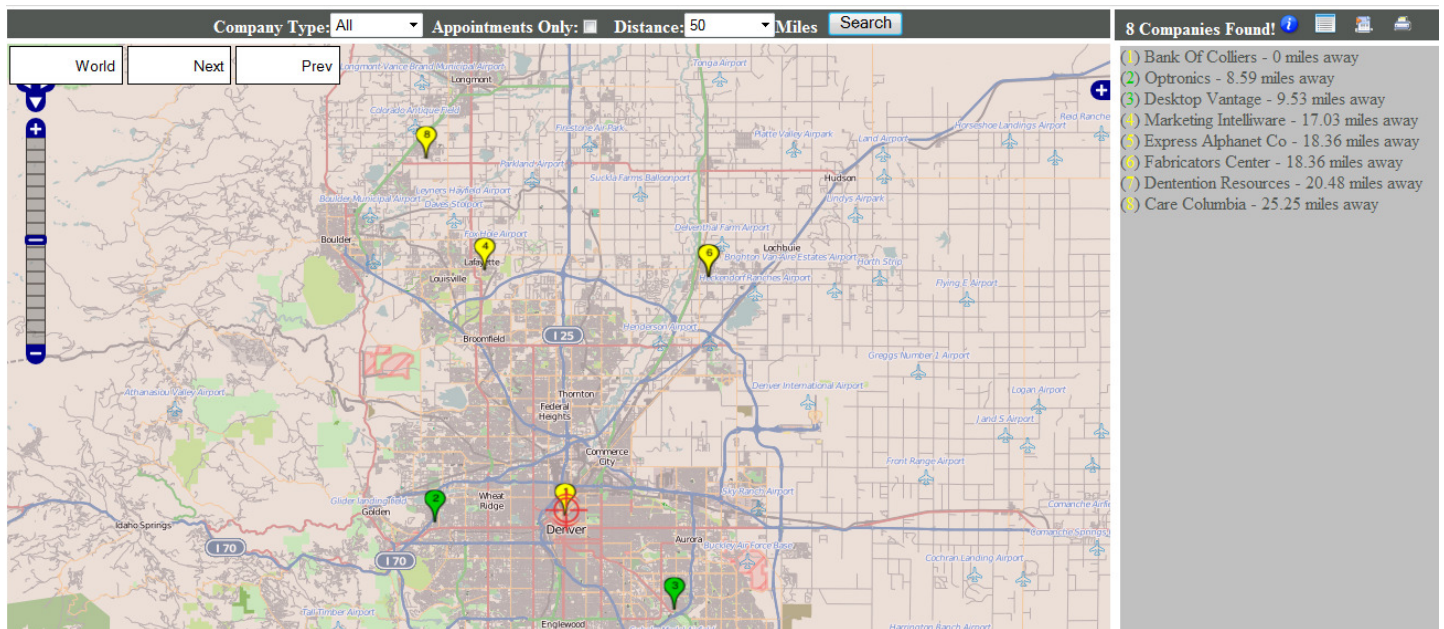
**Interested in an Advanced Mapping/Routing solution for your SageCRM system? We have a solution...**

**Effective Solutions can assist with the implementation of an Advanced Mapping/Routing solution for your SageCRM system. Here is how it works and the functionality that is included:**

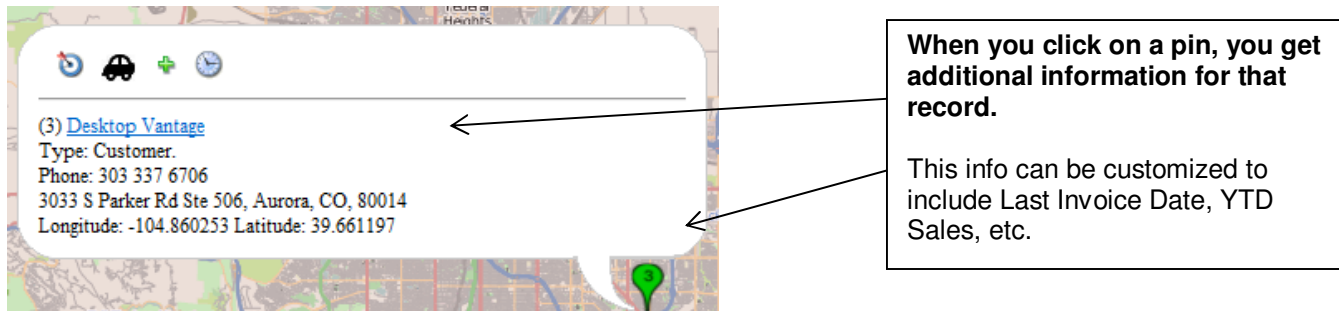
When you pull up a company in SageCRM you will have an S5maps tab available to click on.



When you click on the tab, it will pull up the company on a map and use it as the center point. It will also display other customer and prospect records on the map as well and let you set a radius parameter to the map. Like the example below:



Notice that the customers are green pinpoints and the prospects are yellow pinpoints. You can zoom in/out just like any other map application. You can click on any pin to get additional information on that company.



From this Pop-Up window you can also perform some additional functions that can save your SageCRM users lots of time when they are scheduling sales calls and planning out their week.

Clicking on the Bull's-eye image makes this company the center/starting point on the map.

Clicking on the Car image will give you a distance/time/route to this point from the current start point.

Clicking on the "+" symbol will add this location to the existing route, so you can have multiple locations included in the route.

Clicking on the Clock symbol will let you quickly schedule an appointment in SageCRM for this company.

(3) [Desktop Vantage](#)  
 Type: Customer.  
 Phone: 303 337 6706  
 3033 S Parker Rd Ste 506, Aurora, CO, 80014  
 Longitude: -104.860253 Latitude: 39.661197

You can set the map to pop up in a separate window. Then, when you click on the Company name it will jump to that record in CRM.

Here is what the routing functionality looks like when you click on the Car image.

Appointments Only
 Distance:  Miles

Total Distance: 16.55 miles.  
 Total Drive Time: 19 minutes.

Starting at: Bank Of Colliers

- ↙ Head southwest for 236 ft
- ↙ Turn left at 17th Street for 167 ft
- ↘ Turn right at Larimer Street for 0.2 miles
- ↘ Turn right at 15th Street for 0.1 miles
- ↘ Slight left for 0.1 miles
- ↑ Continue on Blake Street for 0.2 miles
- ↑ Continue on Auraria Parkway for 0.7 miles
- ↑ Continue for 0.9 miles
- ↑ Continue on I25;US6;US85 for 0.3 miles
- ↑ Continue on I25;US85 for 0.2 miles
- ↑ Continue on I25;US85 for 1.0 miles
- ↑ Continue on I25;US85 for 0.4 miles
- ↑ Continue on I25 for 0.9 miles
- ↑ Continue on I25 for 0.3 miles
- ↑ Continue on I25 for 1.4 miles
- ↙ Slight left at I25/South Valley Highway for 1.8 miles
- ↑ Continue on I25/South Valley Highway for 0.8 miles

Let us know if you are interested in this Advanced Mapping/Routing solution and we can provide a live demo and a price quote for the implementation.